

NEW

Thermocline for Windows 3
Distributed Worldwide in 2006

THE NEWSLETTER OF
NEWPORT SCIENTIFIC®
APRIL 2006

The philosophy: familiarity, speed, ease of use

Market research tells us the most highly valued features in equipment software are familiarity with Windows format, speed and ease of use, features that we've included in our new Thermocline for Windows 3 (TCW3).

TCW3 has been written to retain the best of earlier versions, including flexible test profiles, graph overlay and comparison and a powerful formula evaluator, and combined them with new features. The result is the power and flexibility of existing TCW in an integrated package that combines data acquisition and data analysis into one software tool.

Just two types of files do it all

In a triumph of simplification, just two types of files handle all the RVA settings and data.

THE PROJECT contains all the test information including the RVA settings ('profile') under which the test was run, raw test data, the analysis results and test information. A project file is infinitely flexible: a new test can be added, and multiple project files can be merged as required.

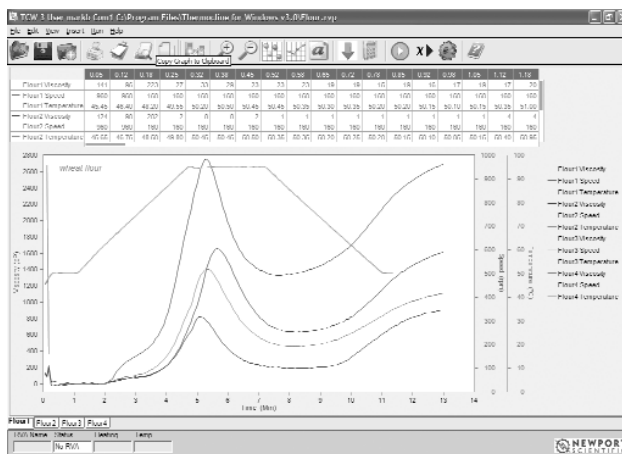
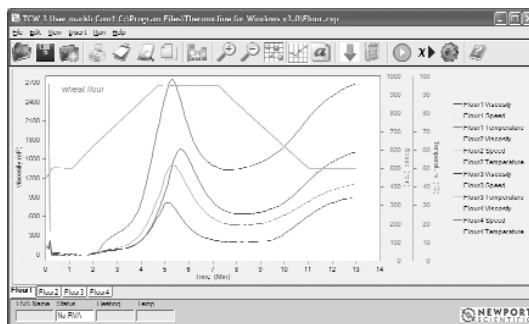
THE CONFIGURATION contains all the information the RVA needs to collect data, transfer it to a project, analyse it and display it.

The features

- Tabbed interface like Excel with real time overlay of running and saved graphs.
- Single page interactive reporting. Hovering the mouse over a data or legend entry will highlight that point or curve on the graph screen and show information about that point.

Safe and secure

TCW3 complies with electronic records/electronic signature (ER/ES) requirements; it can create a traceable trail of who ran what test and when; and it uses checksums to ensure that data and the program have not been tampered with.



configuration project



10

newport scientific news

New suite on show at Australian Technology Showcase Exhibition



Managing Director Rodney Booth at the ATS Exhibition.

It was a first for Newport Scientific to be invited to exhibit at the Australian Technology Showcase (ATS) exhibition at Telstra Dome in Melbourne on 9 March, where our new pre-harvest grain quality analysis suite of instruments was on show. The exhibition of approximately 100 innovative Australian technologies was a part of the Business Club Australia events associated with the Commonwealth Games, Melbourne 2006, and the guest speaker was James O'Loughlin, host of ABC TV's New Inventors program.

Our new pre-harvest grain quality analysis suite of instruments includes RVA-StarchMaster, CleanMill 8000 and Robot Dispenser. By combining the RVA with the CleanMill 8000 and the Robot Dispenser, the testing process is automated and operator time and involvement is minimised. The CleanMill 8000 automatically produces ground sub-sample with minimal dust and noise in the operator environment. Then the Robot Dispenser check weighs the sample and adds the correct amount of water to it, ready for the 3-minute sample analysis on the RVA-StarchMaster.

News from Corinne in Europe



Steve Pike, Newport's distributor for Switzerland.

Newport Scientific Europe has been participating in events across cereals, food rheology, and starch segments.

RECENTLY NEWPORT SCIENTIFIC EUROPE HAS ATTENDED:

- the AACC Science of Wheat and Milling course in Leuven, Belgium, where we presented and demonstrated both the RVA-Super4 and doughLAB (6–8 February);
- the Feria Internacional de la Maquinaria Agrícola (FIMA) in Spain (14–18 February);
- the International Food Rheology Symposium (IFRS) 2006 in Zurich (19–23 February);
- the Nordic Rheology Conference in Stockholm, through our distributor Calibre Control (March);
- Anuga Food Tech in Cologne (4–7 April).

We will also be at the 2nd European Bioethanol-Technology Meeting and the 57th Starch Conference in Detmold, Germany, between 25–28 April, 2006.

On the road in India



A series of successful seminars and workshops was held in Mumbai and Bangalore to introduce the RVA to new markets in South India, and to introduce existing RVA users to advanced features in TCW software. The workshops included a substantial practical component with customers' rice and ragi (finger millet) among the samples tested during the one-week roadshow.

Dr Shailaja Hittalmani & Mrs Kumkum Mittal.

MEET THE PEOPLE: EDWARD TATTERSALL



After completing a Diploma in Computer Engineering (NZ), Edward worked in the Australian outback, the Middle East, South America and the USA on oil exploration crews as an instrument technician and overseeing field crews and then was production manager at a contract electronic assembly facility. He subsequently obtained a Diploma in Quality systems (TAFE Sydney) and a Certificate IV in Workplace Safety (TAFE Sydney).

Edward is a Production Technician at Newport, having joined the team in 2005. His role is to ensure quality of production of Newport's scientific instruments and specialises in RVA-4 and RVA-Super4 manufacture. He also co-ordinates the workshop, layout, purchasing and stock allocation.

Outside work, Edward is heavily involved in his local community, in disability issues and local church and school committees.



Newport Scientific Pty Ltd Unit 1, 2 Apollo St, Warriewood NSW 2102 Australia
Tel +61 (02) 9979 6992 Fax +61 (02) 9979 6993
Email: support@newport.com.au Website: www.newport.com.au