

newport news

from the makers of RVA™ products

issue 1

june 1998

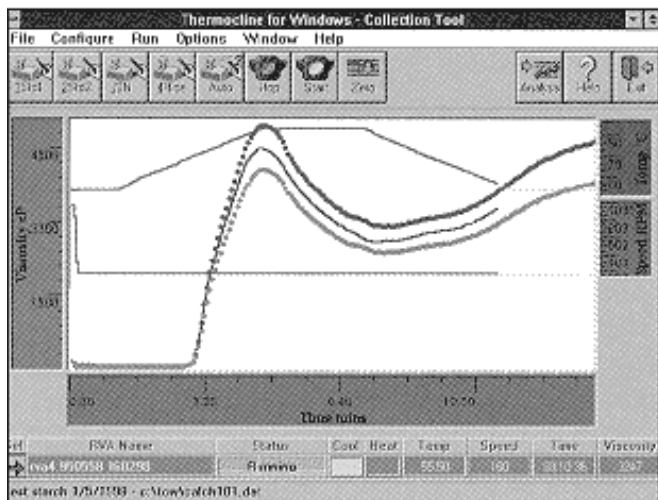
New Thermocline for Windows

more features, more power

RVA users require evermore sophisticated features from their viscometer/software package but, along with increased features and power, they also want the software to remain easy to learn and easy to use.

Newport Scientific Pty Ltd has addressed these needs by focusing on the continual development of our *Thermocline for Windows* package, incorporating many improvements suggested by our users.

Thermocline for Windows version 2.0 is now available, offering a number of new facilities as standard:



Extended Automode Operation increases the degree of automation possible, enhancing the ease of day-to-day operation.

Now, sequential tests can be run on the RVA without any additional user input at the PC - results are automatically saved and graphs and results automatically printed for error-free operation

Now, once-per-day computer set-up can be a reality.

User-defined test limits give QA personnel an easy-to-understand graphical indication of out of specification samples, alerting staff quickly to potential problems before the test is even completed.

Flexibility has been enhanced with:

- ⚡ both CSV and binary formats to save test data for further analysis in programs such as Excel
- ⚡ improved viscosity calibration for more accurate results at low viscosities
- ⚡ the option of interfacing the software via your own company control program and customised screen.

Ease of use has been enhanced with:

- ⚡ optional direct row and column headers for easy-to-read results tables
- ⚡ easier editing with insert-a-line and delete-a-line functions
- ⚡ last file name, description and analysis recall, to reduce the amount of information to be re-entered for similar tests
- ⚡ improved communication error handling and reporting.

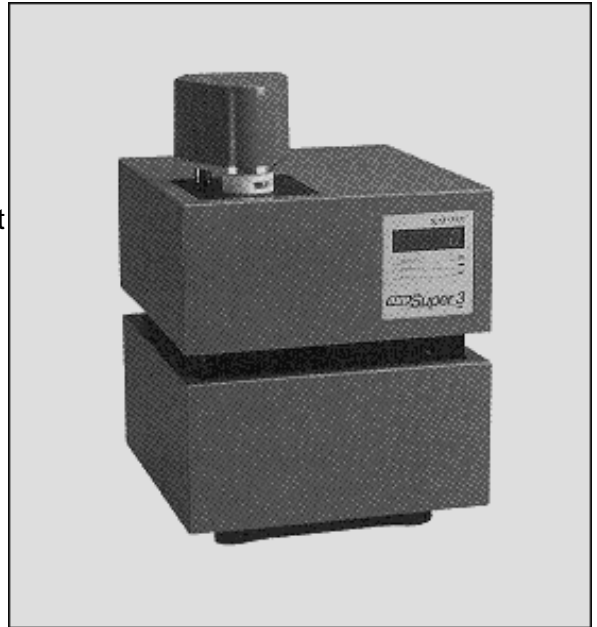
By incorporating the features which you have requested, we believe that we have made *Thermocline for Windows* more powerful and easier to use than ever.

Introducing RVA-Super 3

The latest addition to the RVA-3 family has so many new features we are calling it 'Super3'. With new levels of automation, independence from its computer, ease of operation, and all the functionality of our new ThermoLine for Windows software version 2.0, we think it deserves the name 'Super3'.

Now you can run successive tests with just once-per-day computer set-up - all the prompts and all the results are right there for you on the RVA-Super3 display.

The RVA-Super3 will tell you when it is ready to start a test and, on completion, it will save and print the results as well as print the graph automatically. A new, stylish display panel indicates temperature, elapsed time or viscosity throughout the test, so you can monitor each test in real time.



The RVA-Super3 will handle all the data you have generated on other RVA-3 series instruments and is packaged in a new, low-maintenance, chip-resistant case, suitable for the harshest operating environments.

Best of all, the RVA-Super3's new 5-digit display shows viscosity results in centipoise, the fundamental and traceable units of viscosity and, because the RVA-Super3 is now easier to calibrate, you can be sure of the results every time.

RVA-Super3

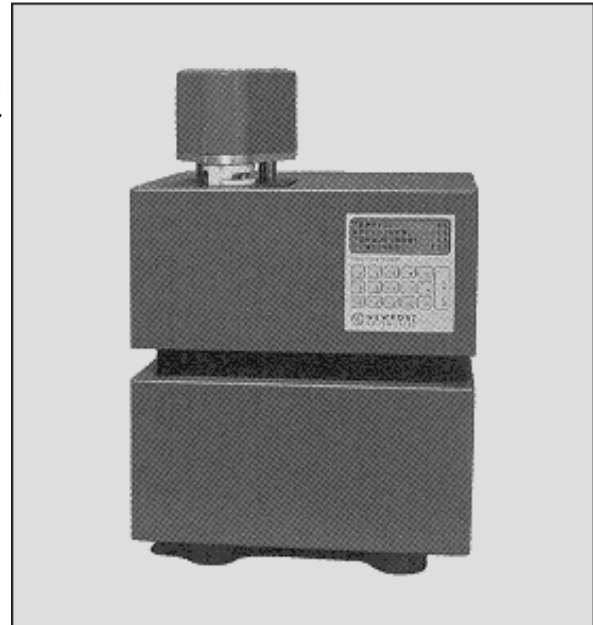


The RVA-4 Stands Alone

Analysts worldwide have asked us for a viscometer which is powerful and yet easy enough for unsupervised, inexperienced or untrained staff to use on a routine, daily basis. Developed to meet the needs of product design, production, quality assurance, quality control, raw material testing, process design and process control departments, the RVA-4 now offers enhanced stand-alone functionality for ultimate ease of operation.

RVA-4 features include:

- ✦ a simple keypad with results displayed in real time at the end of the test so you can monitor each test
- ✦ a hard copy of the results as well as a viscosity graph if required, simply by attaching a printer
- ✦ viscosity results in centipoise, the fundamental and traceable units of viscosity
- ✦ all the usual pasting curve analyses - paste temperature, peak, hold, final, breakdown and setback viscosities.



The RVA-4 is now the most versatile viscometer available today. With the enhanced, stand-alone RVA-4 the choices are yours.

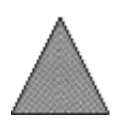
- ✦ Customise your enhanced, stand-alone RVA-4 research laboratory, or use one of the eight default profiles provided by Newport Scientific.
- ✦ Choose stand-alone operation for routine applications, or connect a computer for method development.

A high degree of automation, password protection of program functions and settings, simple set-up and sample preparation, and simple, routine validation ensure that results are accurate, reproducible, and absolutely reliable every time.

Error-free operation can now be a reality in every application with the enhanced stand-alone version of the RVA-4.



RVA-4



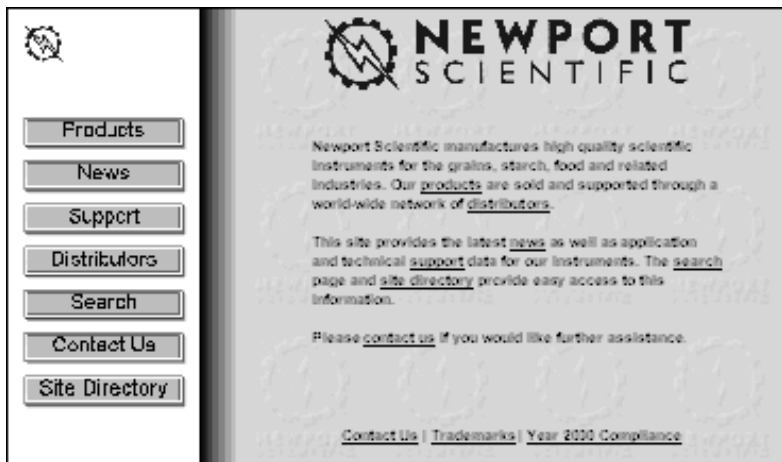
Surf with Newport Scientific

<http://www.newport.com.au/>

What is the quickest and easiest way of finding information about the Rapid Visco Analyser?

Come and visit us at our homepage for:

- ⚡ a library of information related to the RVA and Newport Scientific Pty Ltd
- ⚡ easy access to RVA-related information at a time convenient to you
- ⚡ the opportunity to share information with other RVA users and distributors as well as Newport Scientific Pty Ltd
- ⚡ access to related sites in the starch and cereals industries.



Information available on our homepage includes:

- ⚡ product information and specifications
- ⚡ applications information
- ⚡ Newport Scientific standard methods and A. E. Staley starch methods
- ⚡ a summary of research and references mentioning the RVA
- ⚡ news and articles
- ⚡ contact details for your local RVA distributor and for Newport Scientific Pty Ltd
- ⚡ RVA World on-line.

Be sure to come and visit us soon.

If you would like more information

about upgrading your RVA-4 to enhanced, stand-alone capability or upgrading to Thermocline for Windows version 2.0, please contact your local RVA [distributor](#) or [Newport Scientific Pty Ltd](#).

Newport Scientific P/L
 Unit 1, 2 Apollo Street
 Warriewood NSW 2102 Australia
 Tel: +61 (02) 9979 6992
 Fax: +61 (02) 9979 6993
 Email: support@newport.com.au

